

OPO xx :

*FIELD STATION GOOGLE EARTH:*

*De Nieuwe Wereld*



Intentions

-> Scenario

-> S14

## *Field Station: Google Earth*

### **#1 The assignment**

+ the first characteristics of Google Earth

### **#2 Exploration of Time**

+ Possible Scenarios

### **#3 Zooming in and inserting S14**

### **#4 “Every possible future for S14, happening at once”**

### **#5 a) Back to our beloved earth. The Earth is a sum.**

*The virtual model*

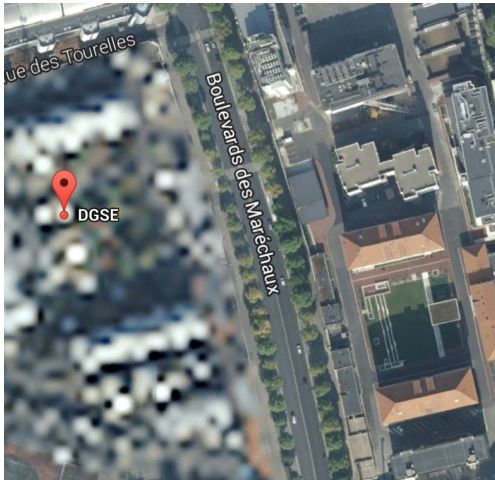
### **b) The model. Translation into the physical world.**

*The physical model*

*Writing myself an assignment:*



*Optical Calibration Target*



*Resolution Border*

## Field Station Google Earth: De Nieuwe Wereld

Google Earth (c) [als context.]

Volgende begrippen (duos) worden gegeven als (mogelijk) startpunt en

inhoudelijke wegwijzer in het ontwerpproces:

cultuur en natuur

reel en virtueel

map en territory

transparancy en privacy

Wat is de invloed van drones en andere vliegende cameras op architectuur? Wat is de ruimtelijke waarde van een 3Dscan? Tot hoever is dit nog representatie van de werkelijk? Uitgeveegde sites, geblurde gebouwen en gephotoshopte landschappen.

Tot hoever gaan bovenstaande en volgende antoniemen nog op?

Virtueel? Realiteit? Fake? Echt?

De Google Earth als ontwerpsite.

Aan de hand van enkele scenarios worden de karakteristieken van deze nieuwe wereld afgetoetst.

tags; James Birdle, Jean Baudrillard, ...

-----  
-----  
""There's a billion to one chance we're living in base reality,""

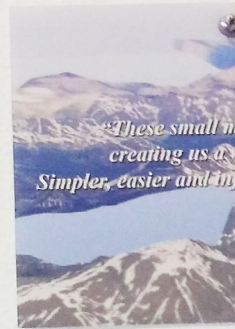
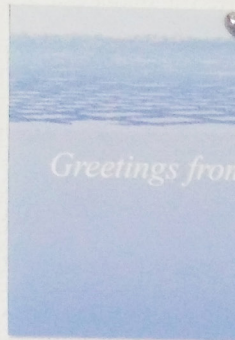
Elon Musk

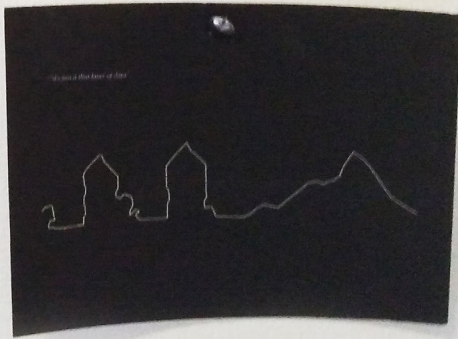
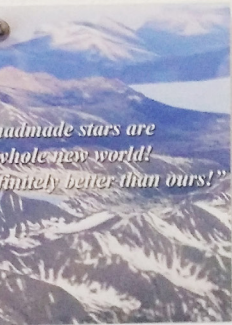
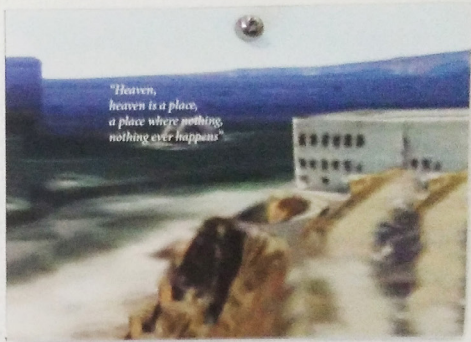
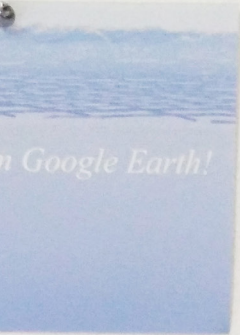
""Hoping against hope that the code can be cracked, that the glitch can be found, and that once again we will be able to tell the difference between virtual and real.""

James Birlde

-----  
-----  
a few words that won't be used: glitch, reality, virtual, hyperreality, bug, representation, fake, echt, ...

# #1 Exploration of Google Earth / Postcards from Google Earth!





**#1 Exploration of Google Earth**  
*/ The Characteristics of Google Earth*

*“Heaven,  
heaven is a place,  
a place where nothing,  
nothing ever happens”*





Google Earth is:

- A world without *hierarchie*\*\*
- A world *with only one layer* \*
- A world which is *really quiete*
- A world where *the sun is always shining*
- A world without *time* \*\*\*

---

\*“a thin layer of data”

\*\* “unlike a map

\*\*\* however...

\*\*\* *tijd: Gemiddeld verandert om de 3 jaar een locatie.*

*Deze veranderingen gebeuren verspreid over de Google*



*“Look, it’s just a*

An aerial photograph of a mountain range, likely the Sierra Nevada, showing rugged peaks and valleys. A thin, semi-transparent layer of light blue and white is overlaid on the terrain, particularly on the upper slopes and peaks, suggesting a thin layer of snow or a data overlay. The text "thin layer of data!" is written in a white, italicized serif font on the left side of the image.

*thin layer of data!"*



*Colonization/ Lan*



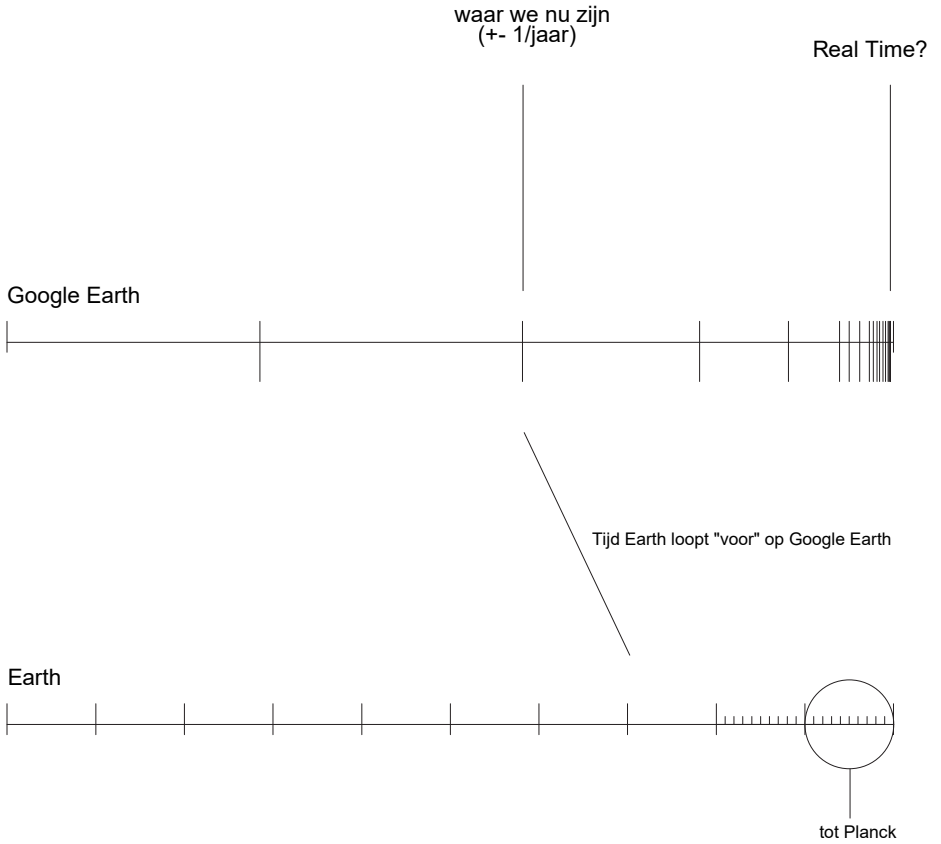
*ding on Google Earth*

**#2 Exploration of Time**  
/ Time and Google Earth  
*ofwel refresh rate*

“One might regard architecture as history arrested  
~~in stone.~~”

A. L. ROWSE

TIJD:  
definitie mbv verandering



## A future for Google Earth

### Scenario #1

*- In this scenario Google Earth is only a memory for Earth. The colony stagnates and Google Earth is only useful for exploration of the past. .*

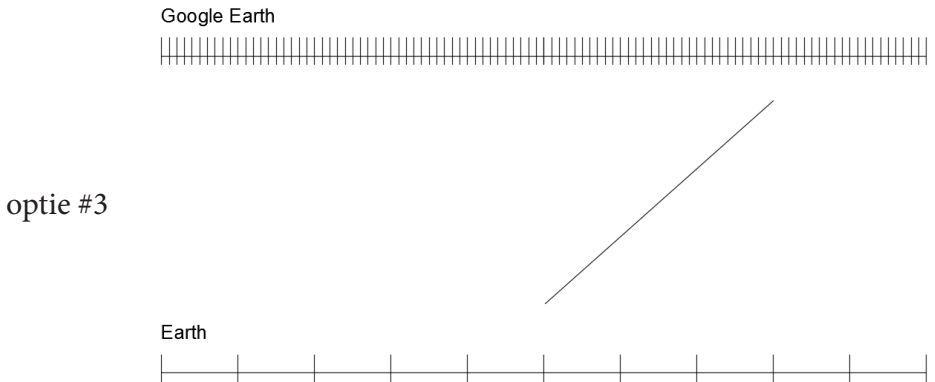
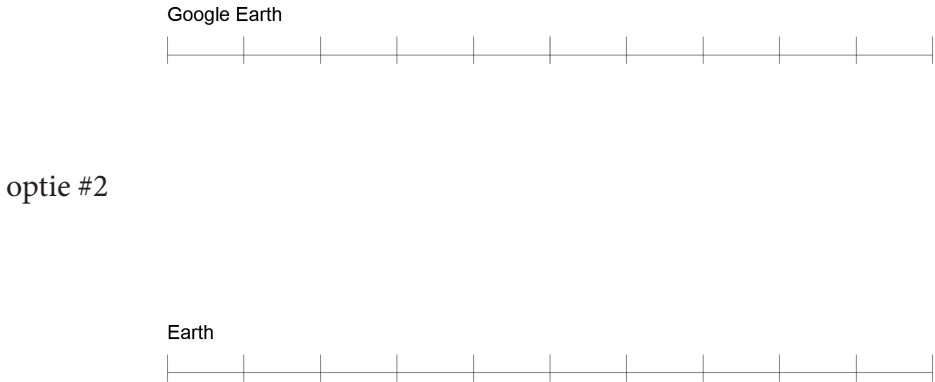
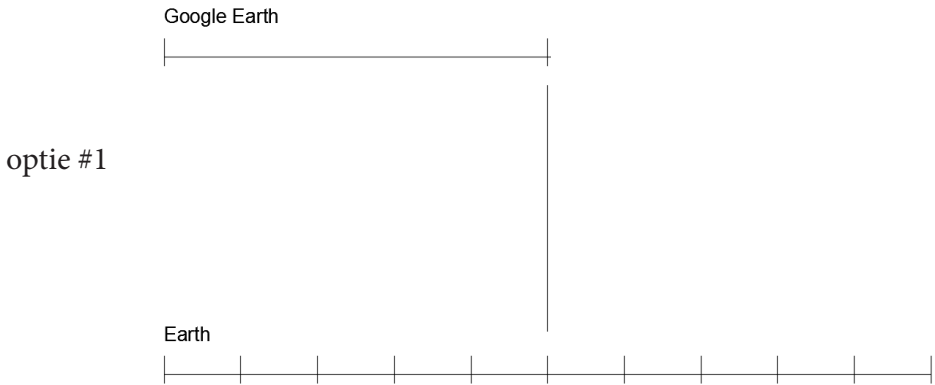
### Scenario #2

*- A “realtime” relationship between Earth and Google Earth. Earth and Google Earth are in fact two parallel worlds, without any hierarchy.*

### Scenario #3

*- Google Earth seems to be much faster and efficient than Earth. Google Earth is always a step ahead of Earth. In the end Earth degrade into a society of lurkers. A society that only longs to be a part of Google Earth but will never be.*





## #2 Scenarios, Scenario 2.5

*/trying to keep up with Google Earth*

Option #2.5

A simultaneous movement;

or ***trying to keep up with Google Earth***

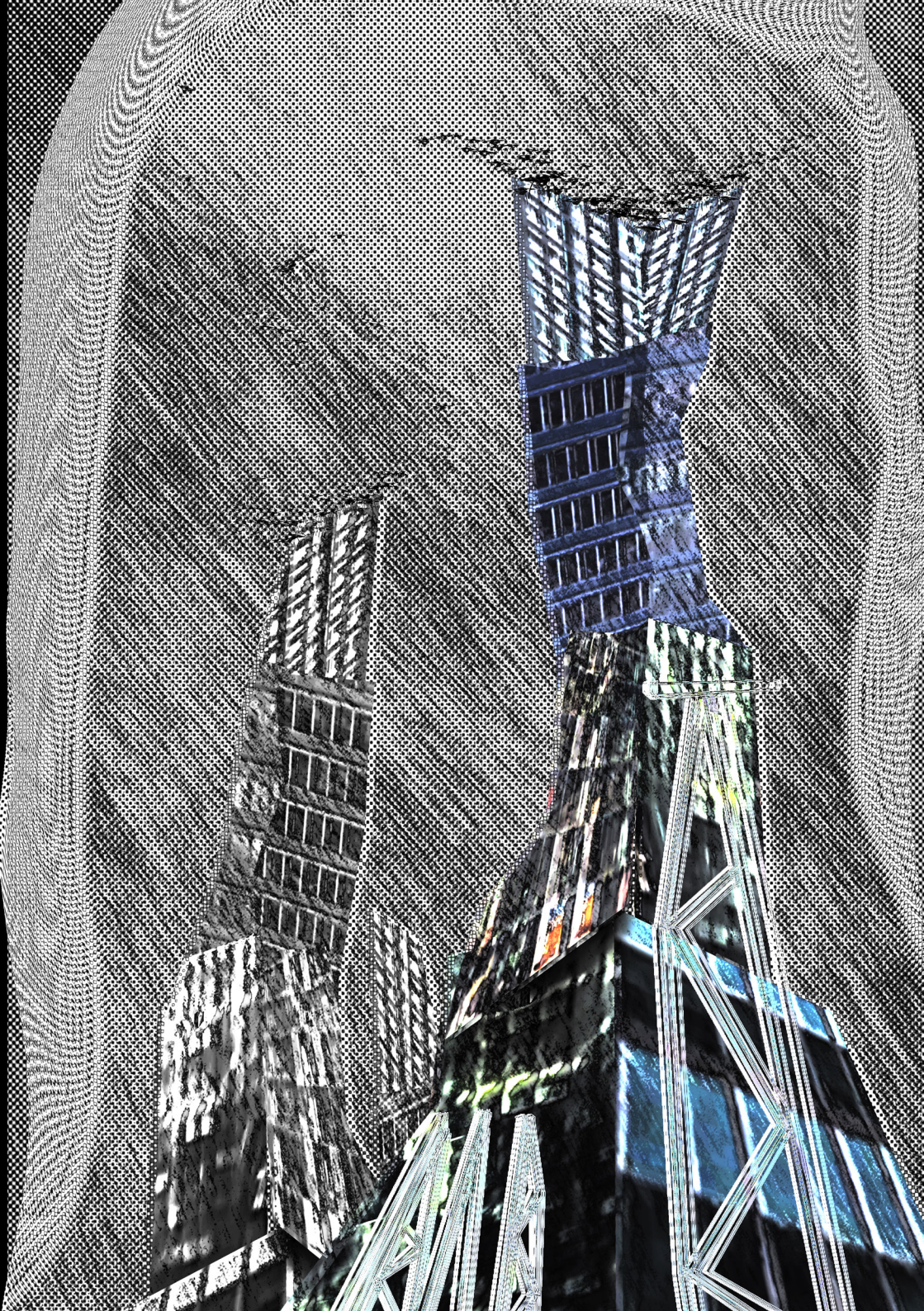
or *a new materiality*

or *the moment when we replaced cameras with 3d-cartridges*

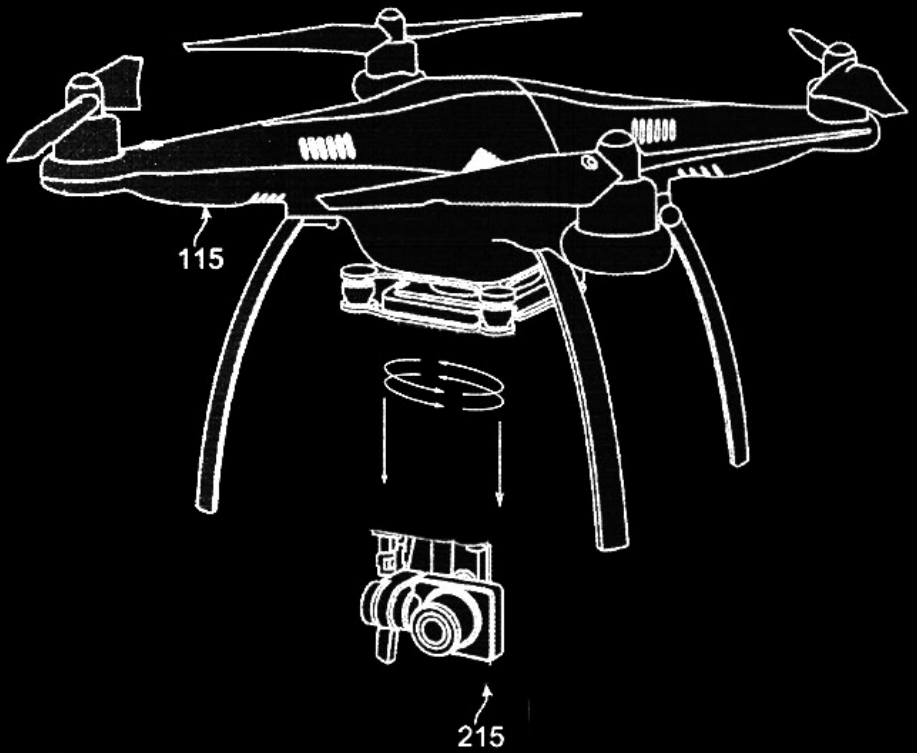
*In this scenario the timerelation between Google Earth and Earth is “equal”.  
That what happens in Google Earth will resonate in Earth and visa versa. .  
There is no hierarchy between the both worlds, they’re by definition “equal”,  
However...*

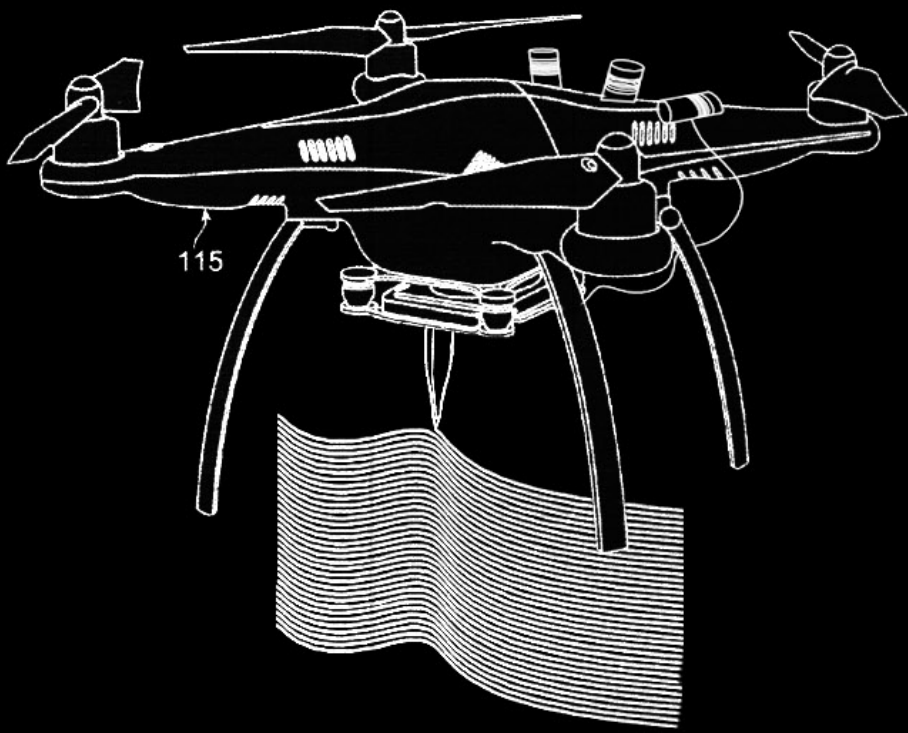
*In the scenario i’m going just a step futher by showing Earth on a moment  
where they are trying to keep up with Google Earth but simply can’t.  
Drones are being converted into flying 3d printers and try in vain to translate  
the **thin layer of data** into a physical layer.*

*de relatie tussen het ‘vlakke’ google earth wordt onhoudbaar.....*



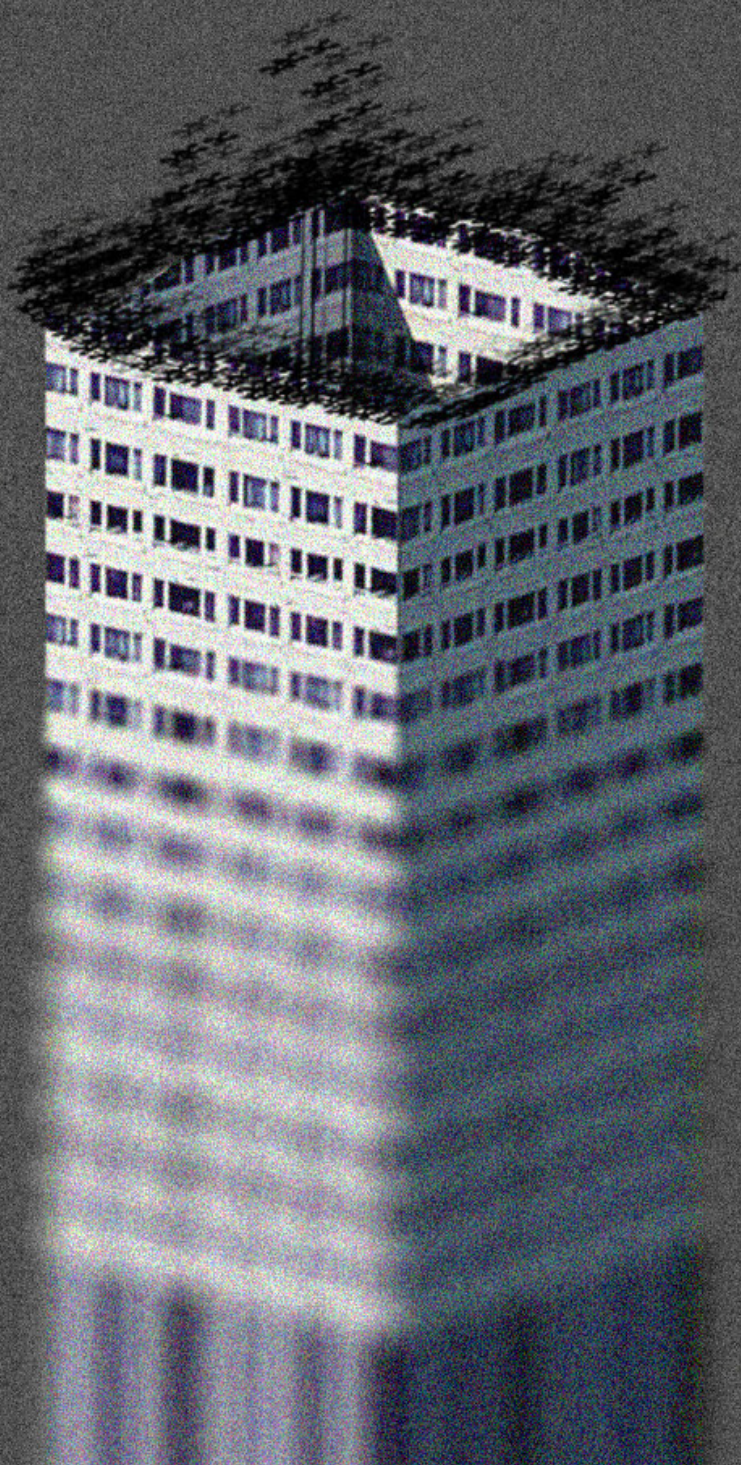
*...or the moment when we replaced cameras with 3d-cartridges*



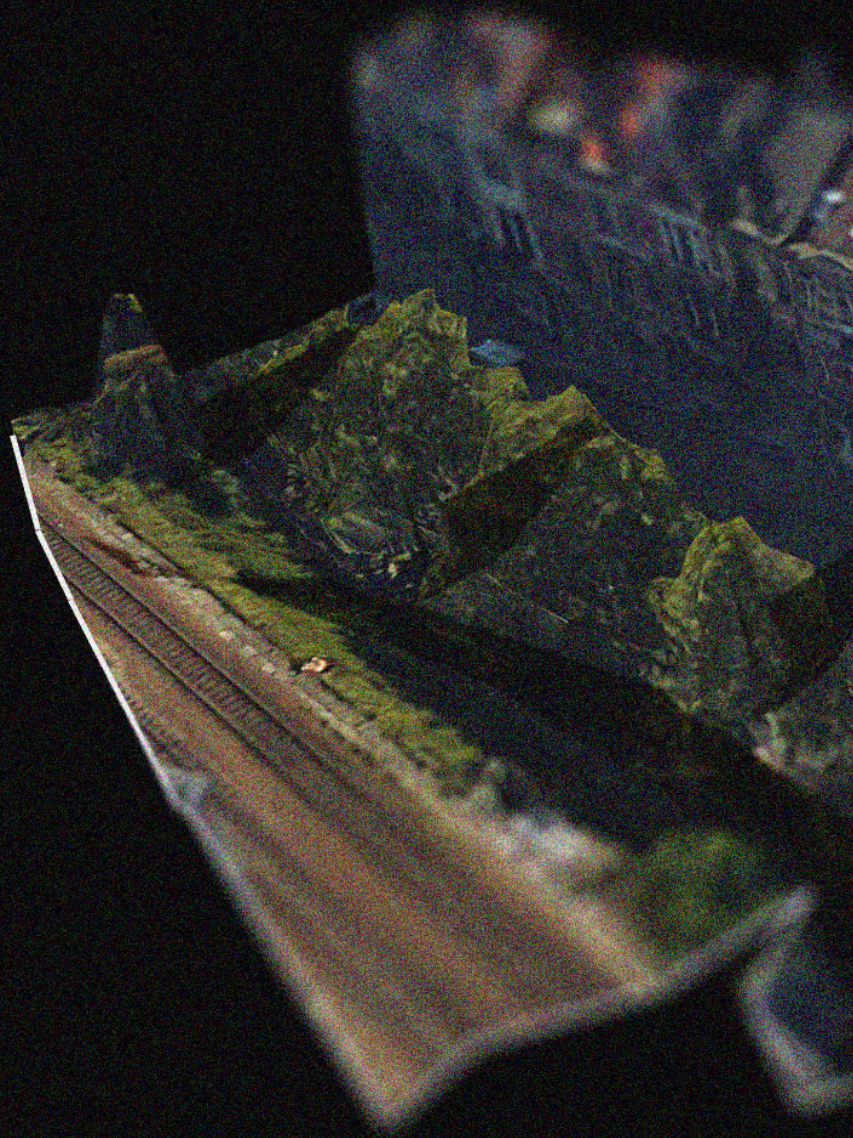


2)

*Drones are being converted into flying 3d printers and try in vain to translate the **thin layer of data** into a physical layer...*

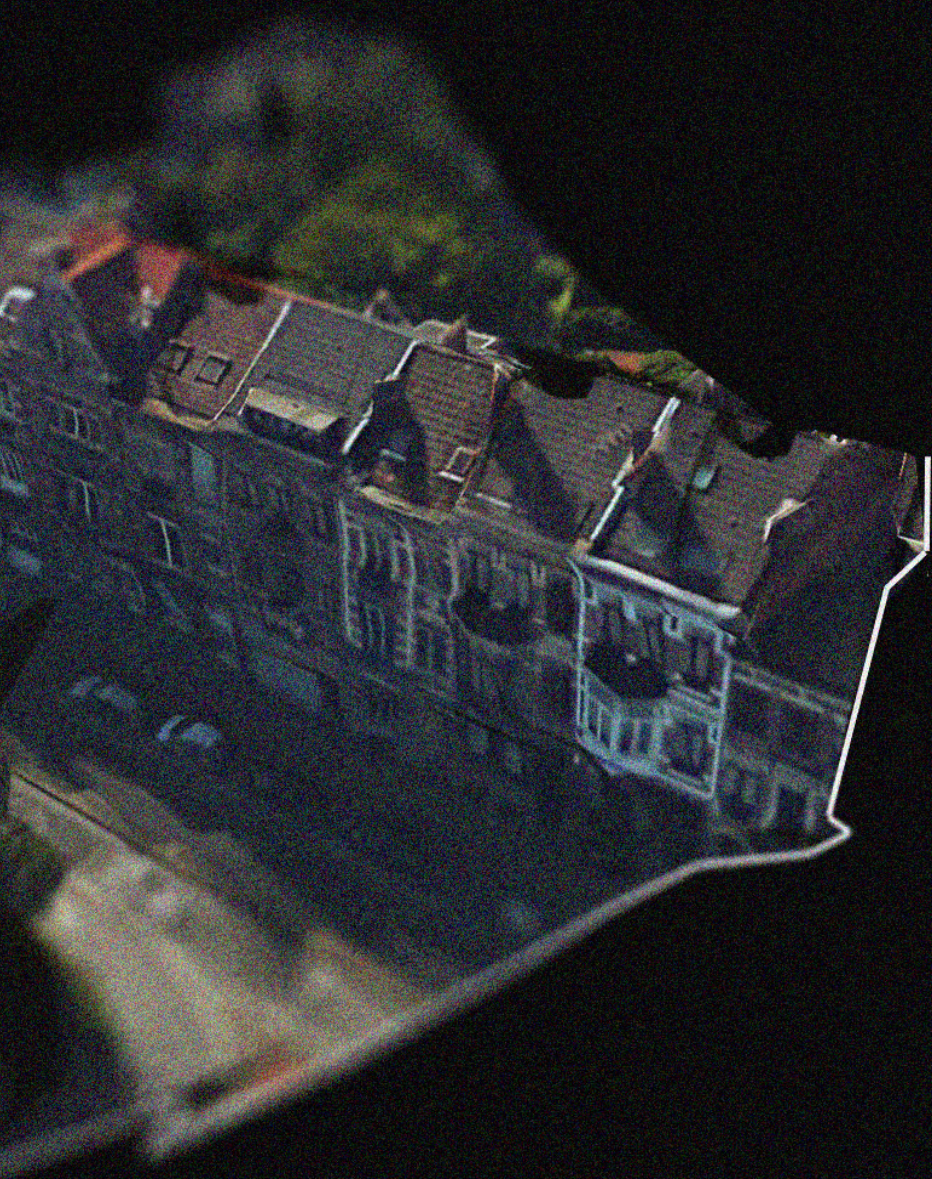


**#3 Zooming in and inserting S14**  
*/stanleystraat 14, Antwerpen*



*so here i try to imagine how s14 would react in this situation, so a situation in which earth is just st*





*step behind of a giant simulation, a google earth dictating the future for earth....*

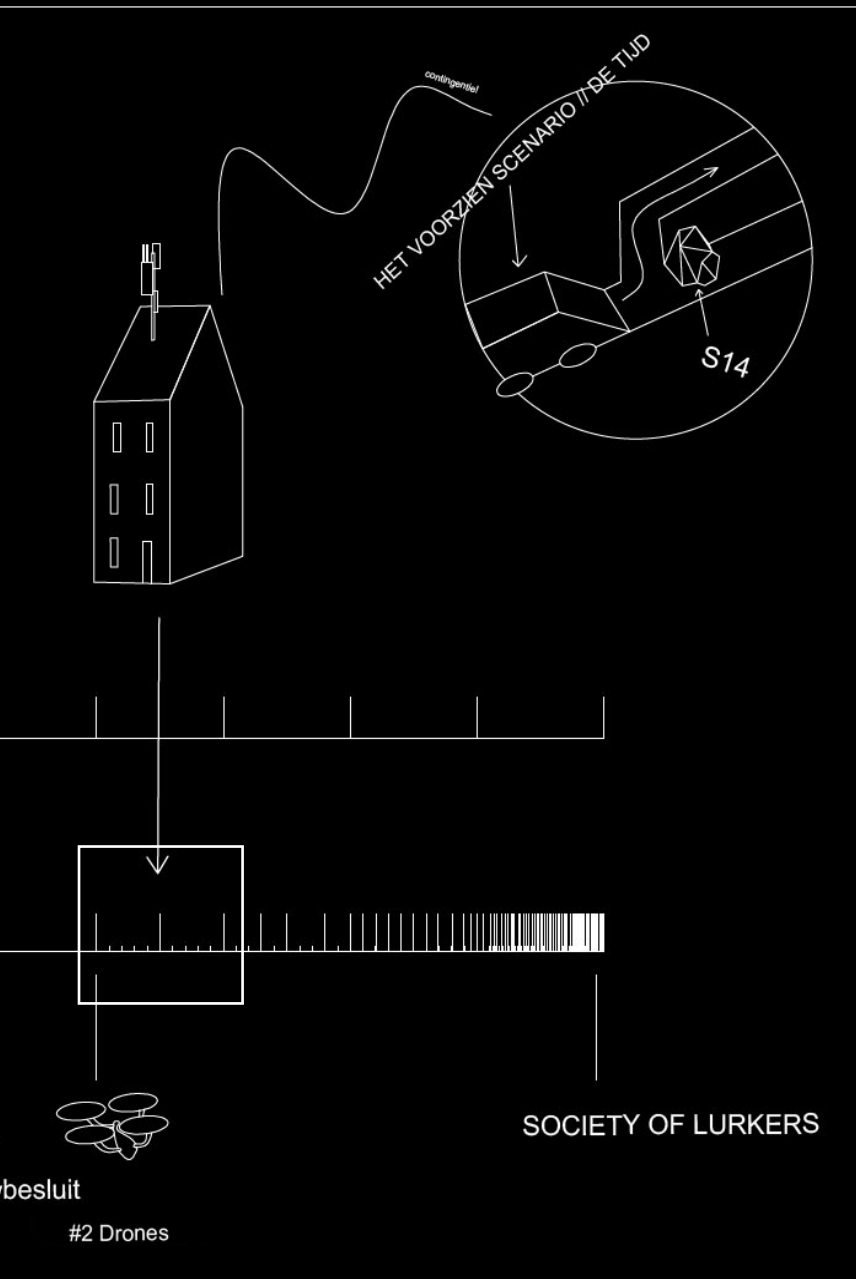
*Earth*

*Google Earth*

© Explains



#1 Bouw



besluit

#2 Drones

SOCIETY OF LURKERS

### **#3.3 The Possibility of multiple Earths?**

*S14 Anarcha-Earth*

Google Earth

Bing Earth

*Anarcha-Earth*

*Open Earth*

Immo Earth

Anarchist Earth

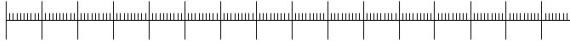
NV-A Earth

Post-Apocalyptic Earth

...

*not one parallel earth but multiple ones...*

Neoliberal-Earth



Anarcha-Earth



Google Earth



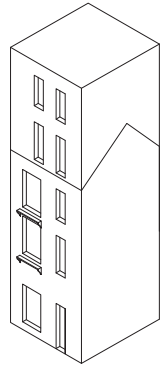
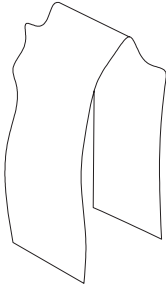
Bing Earth



Earth



*Multiple versions of S14!*



*Google - Earth ©*

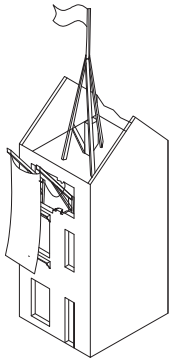
*Global Warming Earth ©*

*Immo Earth ©*

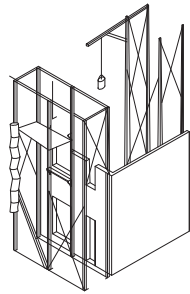
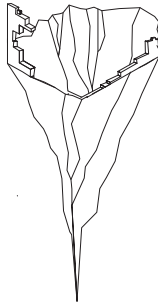
*Post-Apoc*



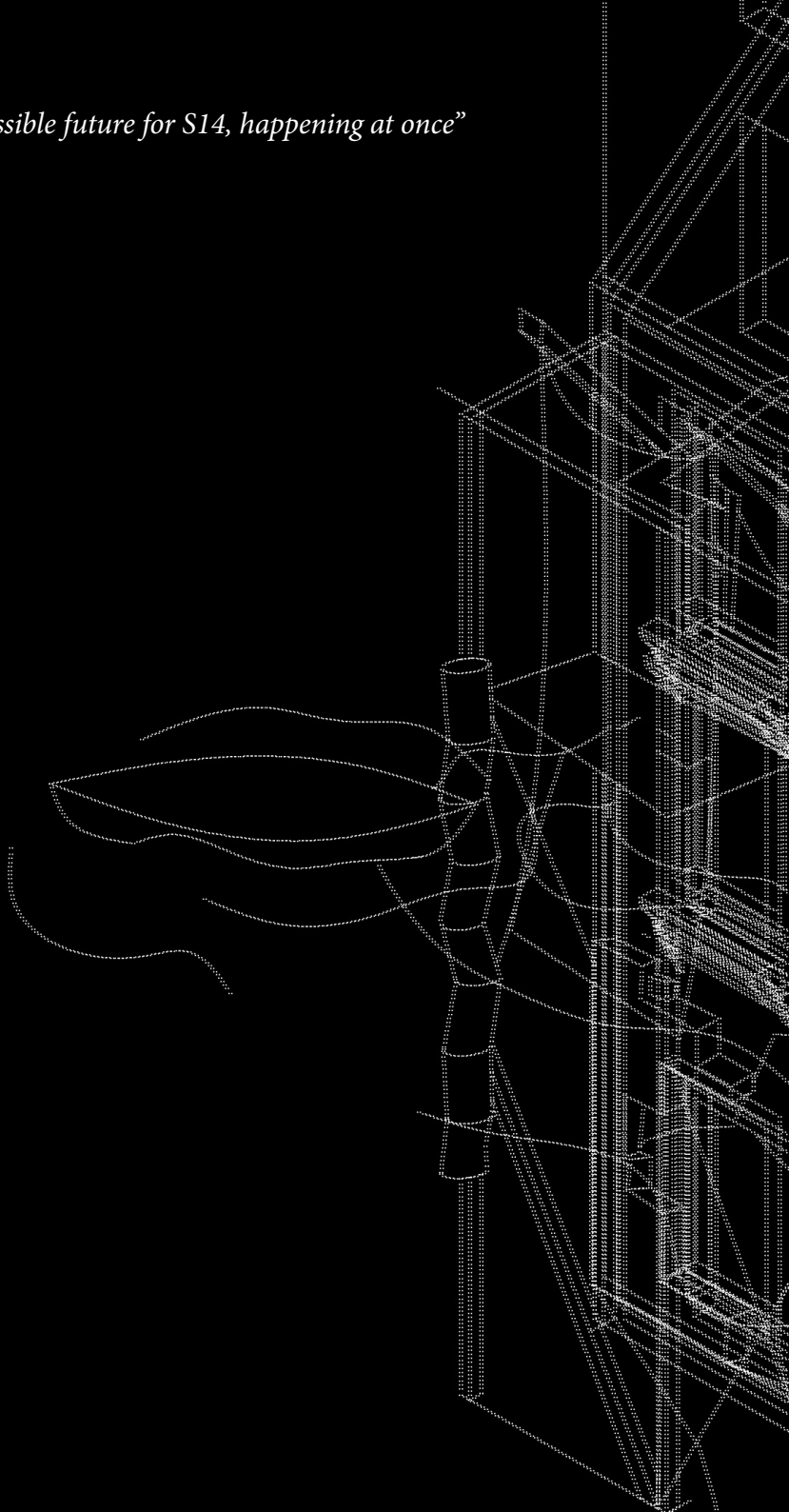
*Apocalyptic Earth* ©



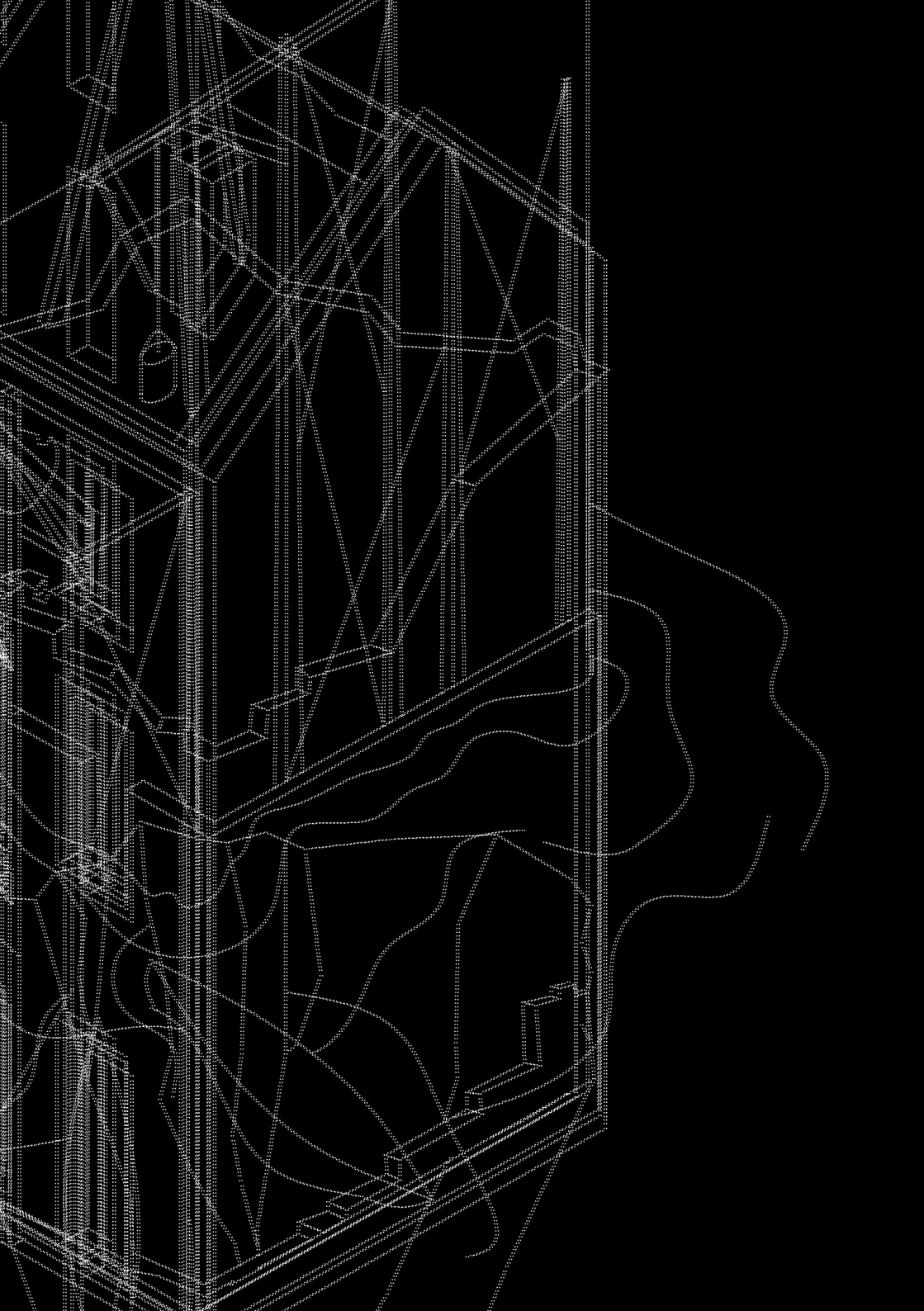
*Anarchist Earth* ©



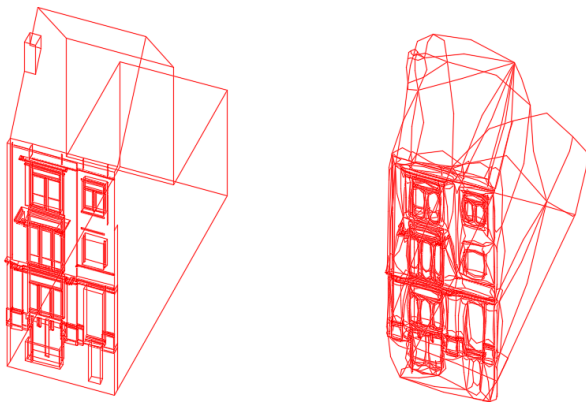
#4 “Every possible future for S14, happening at once”



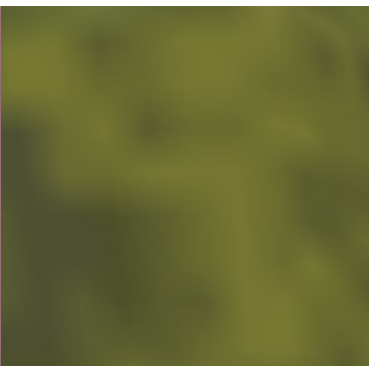
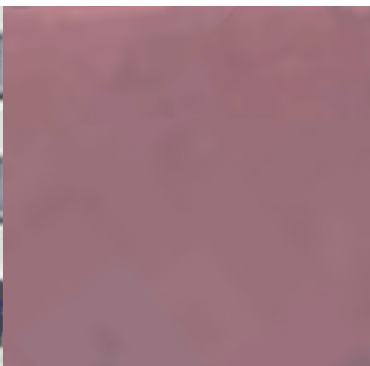
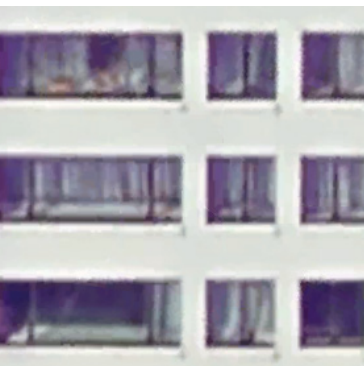




## *Google Earth Texturepack*



*Autocad als "Google-Earthifier"*



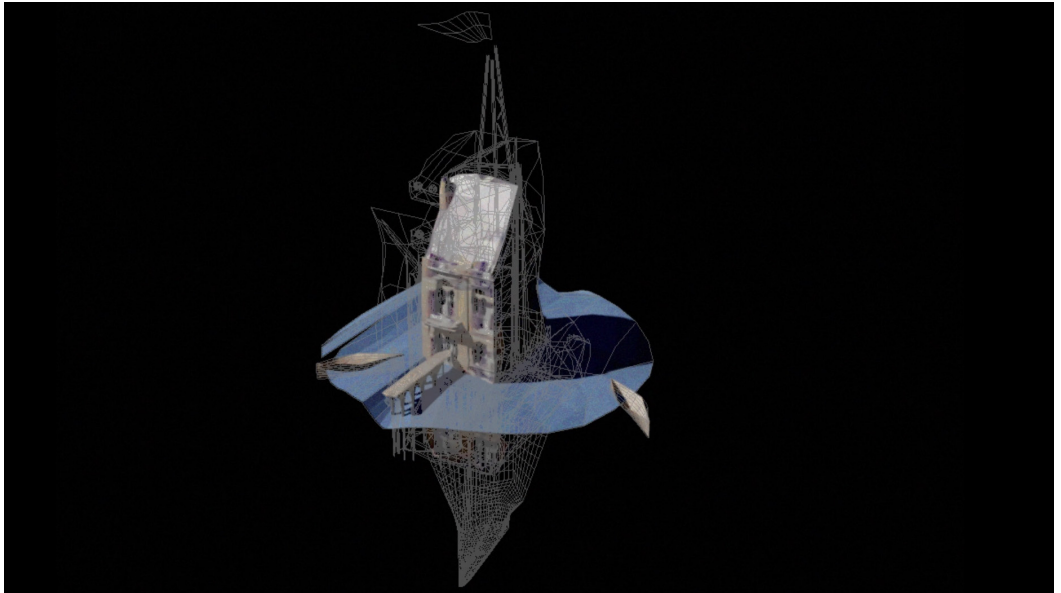
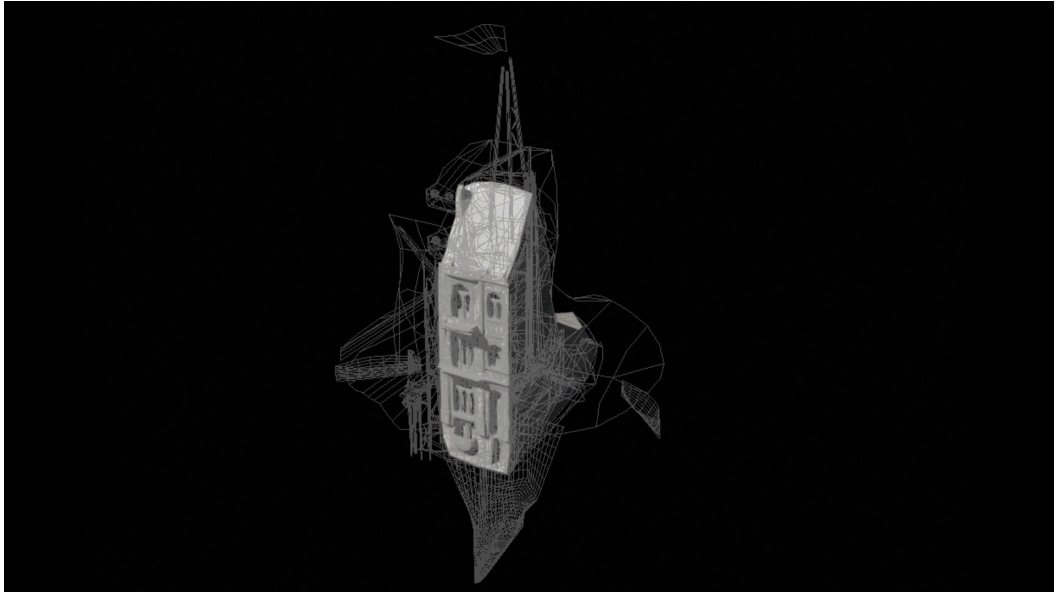
*Immo-Earth*

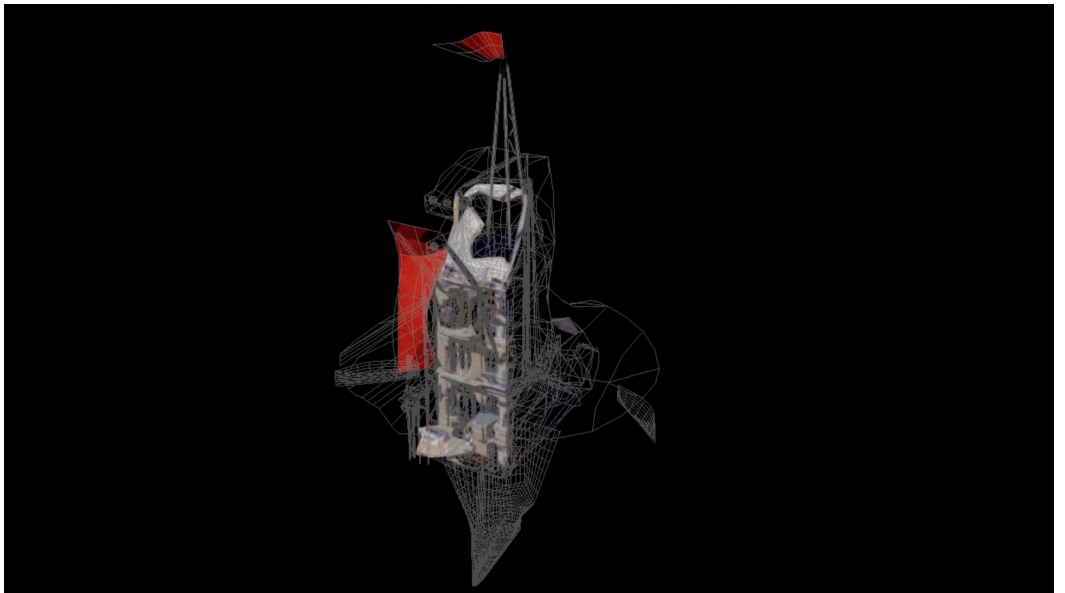
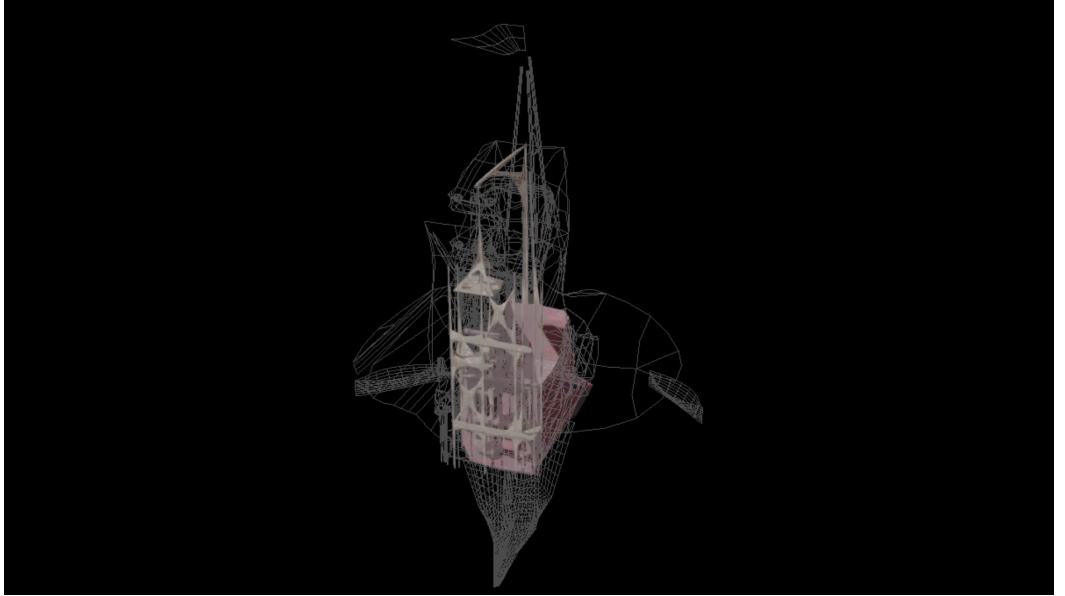




#2

A la recherche d'une esthétique:: la deuxième video [00:00:19:20]



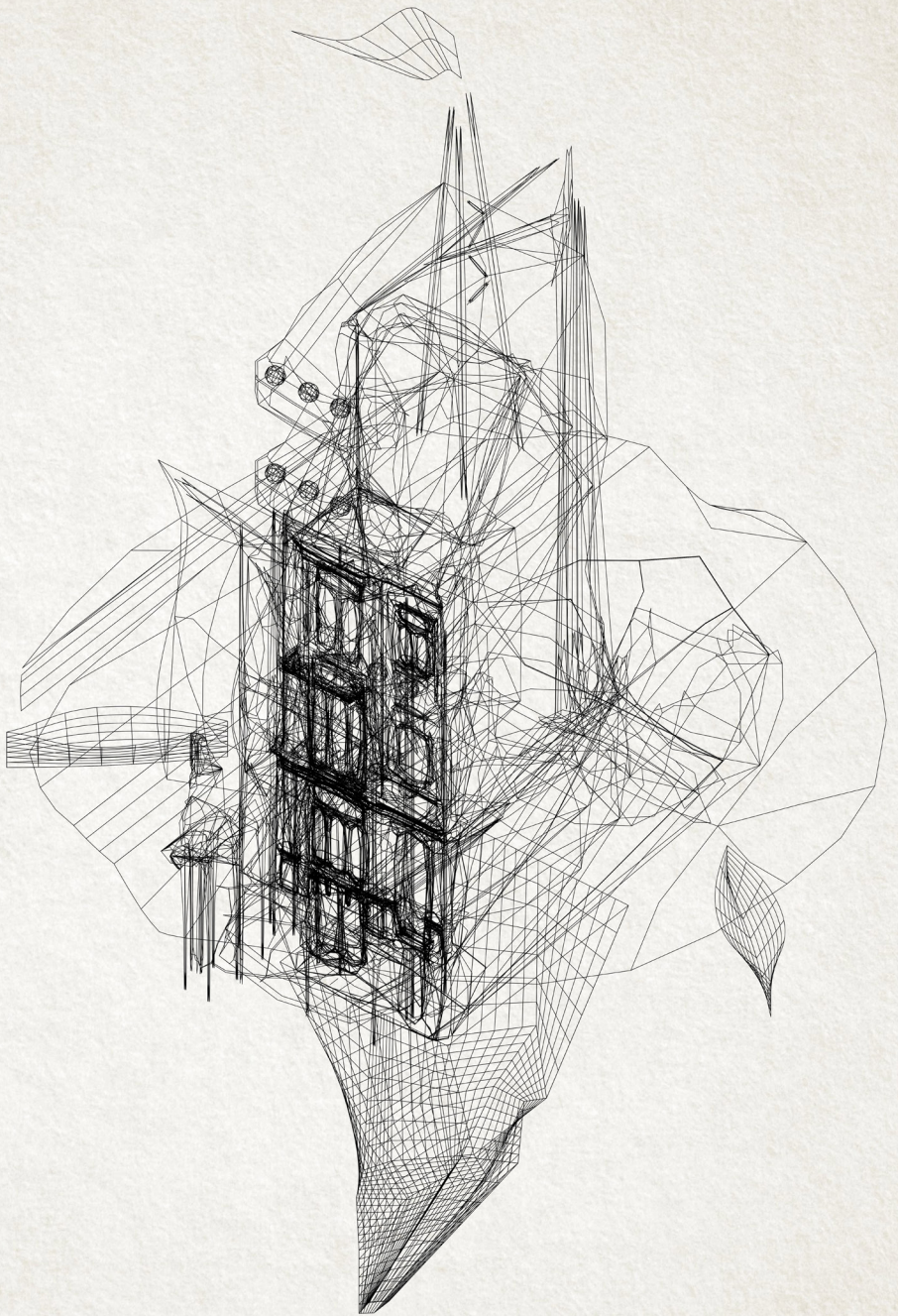


**#5 Back to our beloved earth.**  
*The Earth as the ultimate/average model.*

Last question: *How will this reflect on Earth?*

~~Google~~-Earth  
~~Bing~~-Earth  
*Anarcha*-Earth  
*Open* Earth  
~~Immo~~ Earth  
~~Anarchist~~-Earth  
~~NV-A~~ Earth  
+ ~~Post~~-Apocalyptic Earth  
-----  
**Earth?**

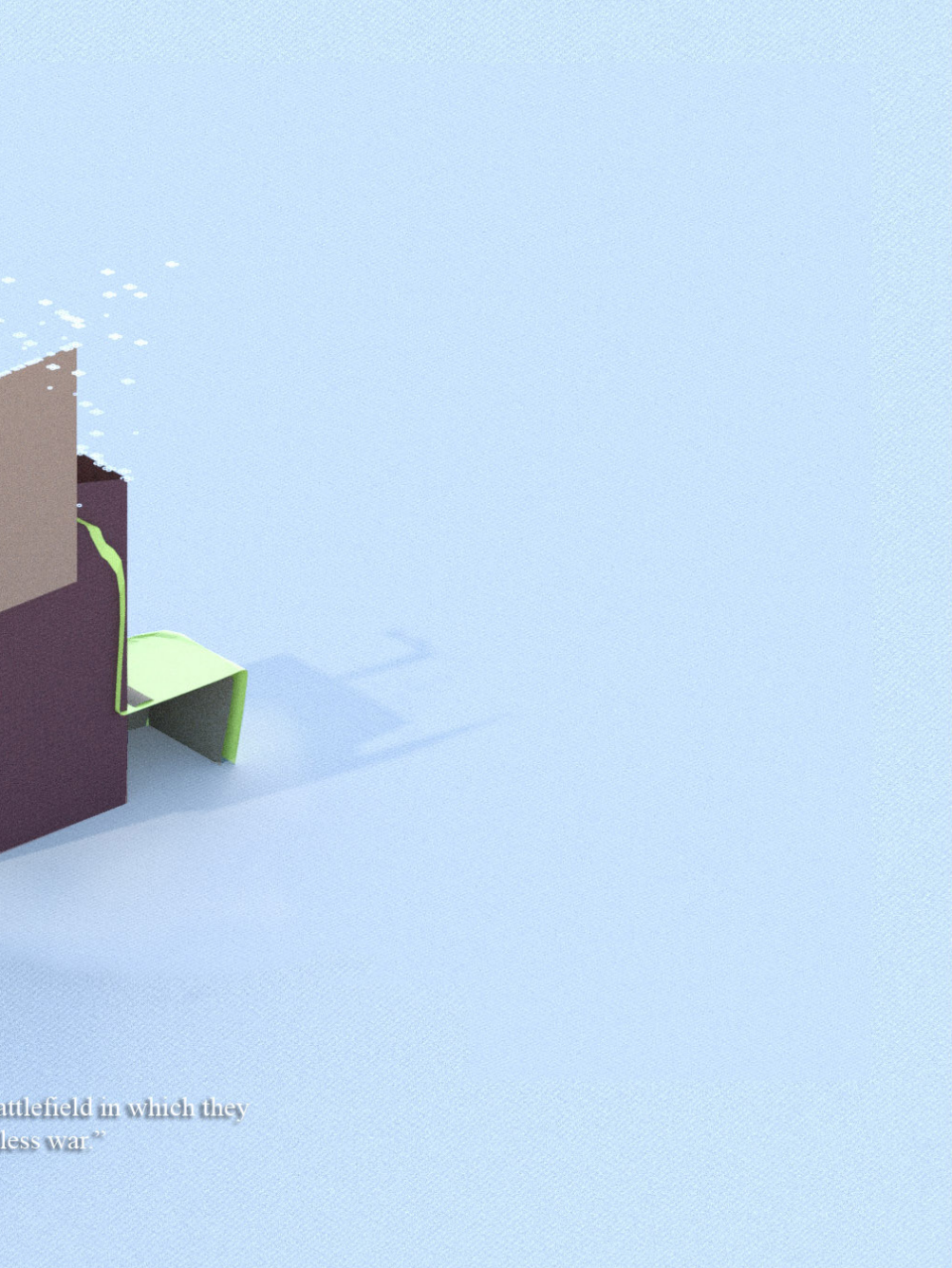






S14

“...and this universe is the battle  
fight out an end



attlefield in which they  
less war”

Google Earth

Bing Earth

*Anarcha-Earth*

*Open Earth*

Immo Earth

Anarchist Earth

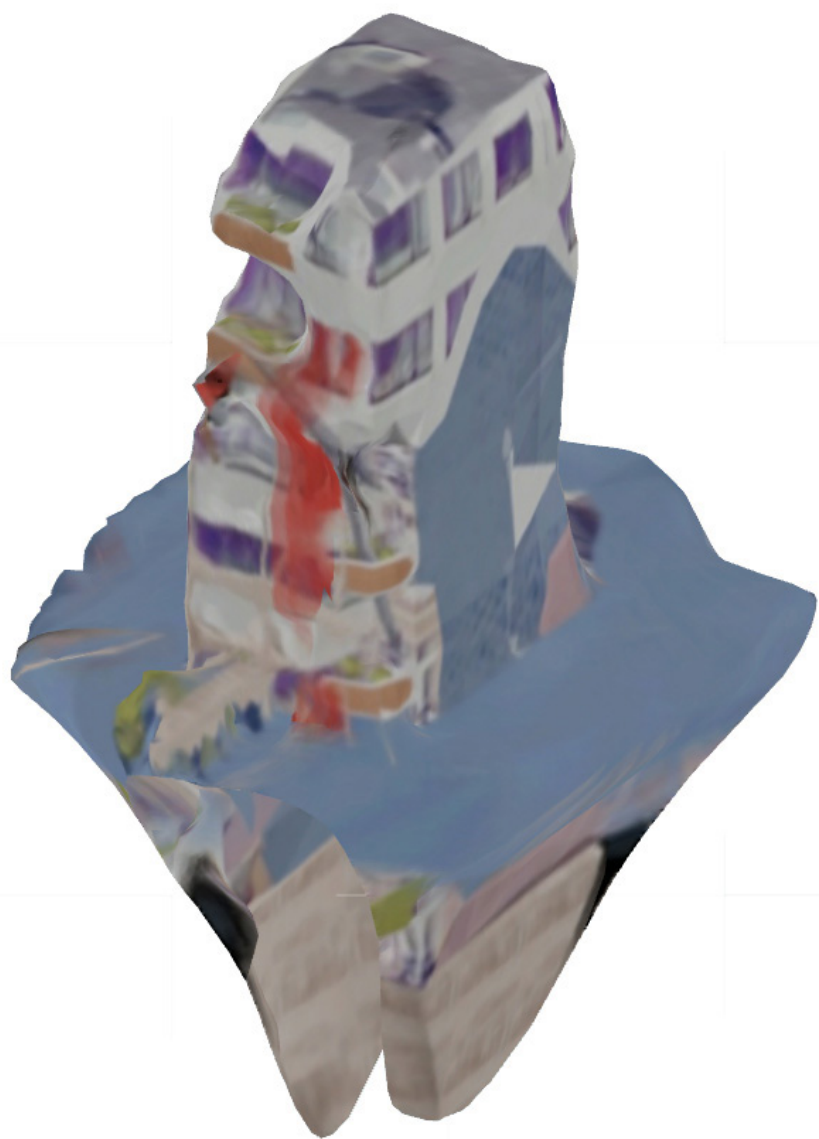
NV-A Earth

+ Post-Apocalyptic Earth

-----

**Earth?**

=



*A New Layer on Earth*







From the virtual into the physical,  
let's walk to the model.